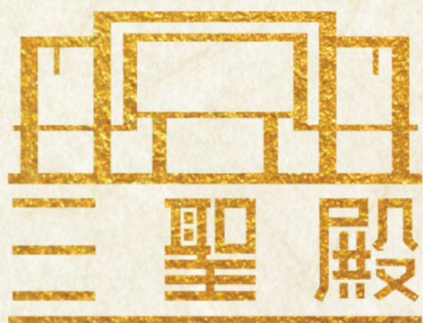


富贵山庄（古来） | 庄严静美的永恒圣境



SSD B2 S28



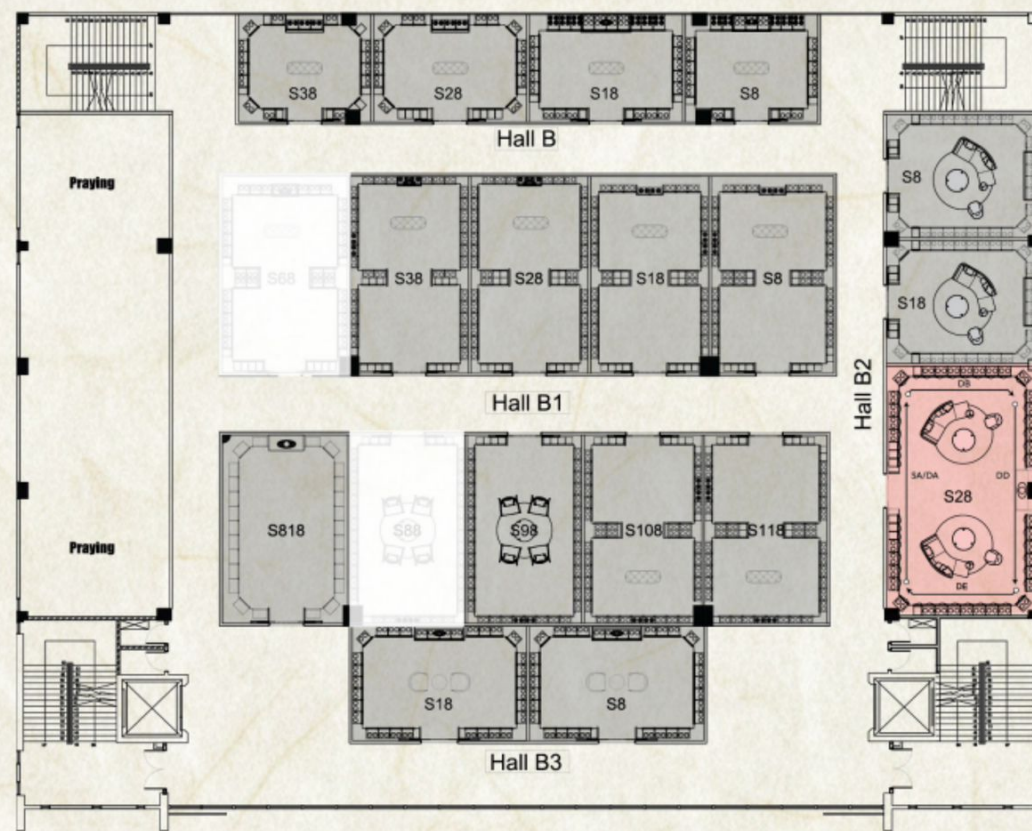
富貴  NIRVANA®



骨灰殿主佛 千手觀音

主殿中央安奉千手观音圣像，法相庄严圆满，慈悲广布，护佑恒常。愿力如光恒照，指引归途。殿内肃穆安定，光影柔和流转，金色纹饰与雅致格局交织，呈现静谧而庄严的宁和之境。在慈悲护念之中，祈愿延续，思念得以归处。

观音坐莲圣像端坐于门板中央，莲座层叠有序，线条柔和，寓意清净圆满。金色菩提叶镂空环抱其后，叶脉铺展，在光影下呈现柔雅庄重之美。门板内饰铺陈园林净境。金色生命之花为背景，象征圆融生息；前景以樱花、山石、小桥与清流交织，白砂静雅延展，营造宁和澄明之境。动静相映，使空间更显庄严，亦蕴含温润归心之意。



【平面图】



【门板设计】



【内装图】



富貴山庄(古來)有限公司

NIRVANA MEMORIAL PARK (KULAI) SDN.BHD.
Lot 766 & 767, Jalan Kota Tinggi (5KM), 81000 Kulai, Johor.



07-662 1188 / 07-558 6666



Nirvana Memorial Park Kulai 富貴山庄古來

本文件所包含的所有信息 (包括任何说明、规格和插图) 均可在本公司、其顾问、工程师、建筑师和/或有关当局的要求并且不预先另行通知下, 被修改、变动和更改。本文件不拟向亦不能构成要约或合约的一部分。所有视觉效果、影像、图像、平面图和插图均为画家构想图, 仅供说明性参考, 不可作为任何法律依据。尽管本公司在提供此信息已采取合理谨慎的措施, 惟本公司对任何信息变动或不准确性一概不负责。本公司或其代理一概无庸对任何人士因依赖此内容而采取的任何行动承担责任。准确买者应该在采取任何行动前, 自行查询各方面的相关信息, 以满足自身的要求。

All information contained herein (including statements, specifications and illustrations) are subject to amendments, variations and modifications without prior notification, as may be required by the Company, its consultant, engineer, architect and/ or the relevant authorities, and is not intended to form and cannot from part of an offer or contract. All visuals, images, pictures, plans and illustrations are artist's impressions and for illustrative purposes only. Whilst every reasonable care has been taken in providing this information, the Company cannot be held liable for any variation or inaccuracy. No responsibility is accepted by the Company nor its agent for any action taken in reliance thereon. Before acting on any information, prospective purchasers should make their own enquiries to satisfy themselves on all aspects.

* 所有图片仅供参考。All images are reference only

* For full details of the terms and conditions, please refer to the respective purchase orders.

JHR-BRO-00003/2026